

**TWT  
Thermowell  
Bar stock Threaded**



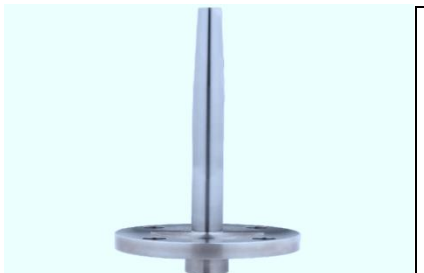
**Features:**

- Design as per PTC 19.3
- These Thermowells are manufactured from solid bar stock and installed into the process with the help of threaded process connection.
- This design is suitable for all type of RTD's, Thermocouples, mechanical as well as digital Temperature Gauges.
- Available in various shapes like Straight, Straight with reduced tip, partial taper & full taper

**TWF  
Thermowell  
Bar stock Flanged**

**Features:**

- Design as per PTC 19.3
- These Thermowells are manufactured from solid bar stock and installed into the process by using a flanged connection
- This design is suitable for all type of RTD's, Thermocouples, Mechanical as well as digital thermometers
- Full penetration welded
- Available in various shapes like Straight, Straight with reduced tip, partial taper & full taper
- All type of flanges and flange facings are available as per ANSI / DIN / JIS & BS



**Application:**

- Chemical plants
- Petrochemical plants
- Engineering plants
- On shore
- Off shore
- Other similar process industries

**TWFT  
Thermowell  
Fabricated Threaded**

**Features:**

- These thermowells are fabricated from pipe with a welded end cap
- These thermowells are installed directly into the process with the help of threaded process connection
- Ideal for use in longer length tank & vessels where bar stock is a limitation

**Application:**

- HVAC Industries
- Utilities
- Chemical plants
- Pharmaceutical
- Engineering plants
- On shore
- Off shore & other similar process industries

**TWS****Thermowell****Bar stock (Weld in / Socket weld)****Features:**

- Design as per PTC 19.3
- These Thermowells are machined from solid bar stock and inserted into the process through direct welded attachment
- This design is suitable for all type of RTD's, Thermocouples, mechanical as well as Digital Thermometers
- Available in various shapes like Straight, Straight with reduced tip, Partial taper & full taper and various exotic materials

**Application:**

- Chemical Plants
- Petrochemical Plants
- Engineering Plants
- On Shore
- Off Shore & Other Similar Process Industries